

Belt Scales

Technical specifications

Type: Dynamic weighing equipment

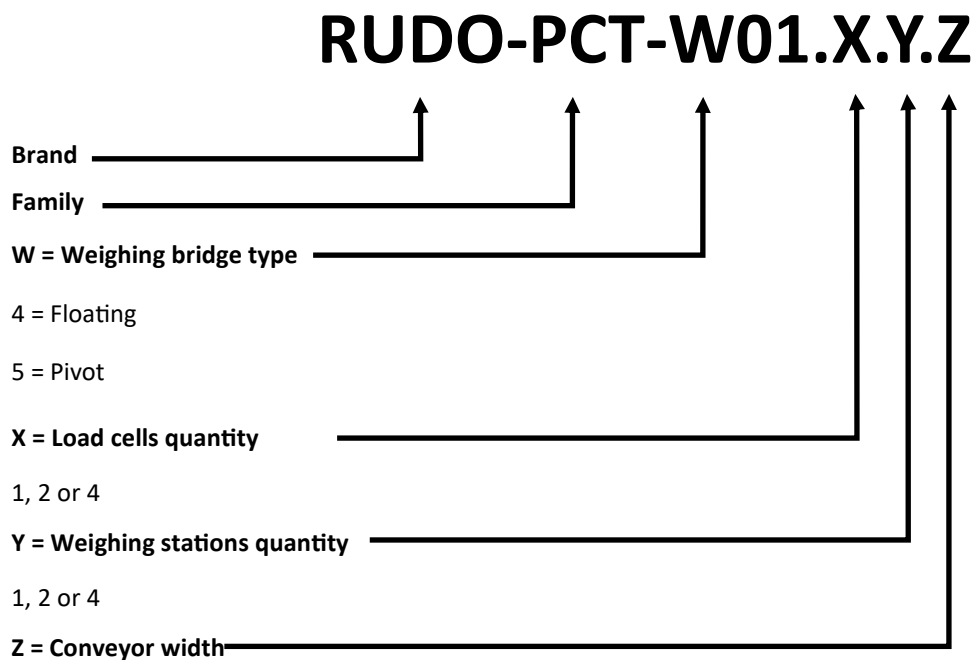
Series: PCT

Belt weighers or belt Scales were the first equipments developed by RDI. Since their initial design back in 1990 until today, more than 100 belt scales have been manufactured gathering a wide know how in weighing techniques allowing us to improve our products in mechanical and electrical and control terms. Equipment from 12" and low flow rate to 6000 tph and 60" wide have been carefully and designed and manufactured.



Belt Scales denomination

With this nomenclature the characteristics of our belt scales can be easily identified.



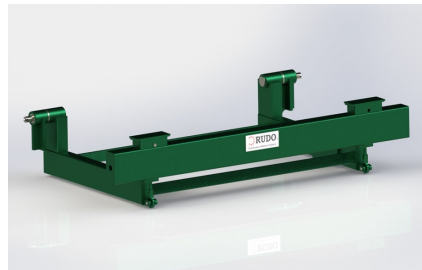
Belt Scales

Technical specifications

Page 2 of 2

Type: Dynamic weighing equipment

Series: PCT



Model PCT		501	401
Description		Conveyor belt scales	
Characteristics		Pivot type weighing bridge	Floating weighint bridge
		Process control	Commercial type
Material	Standard	ASTM A36 Mild steel	
	Optional	AISI 304 Stainless steel	
Surface protection	Standard	Epoxic protection 6 to 10 mills thickness	
	Optional	Galvanized or other specified/ Electrostatic scheme	
Belt width		18" to60"	18" to 42"
Weighing stations		1 or 2	2 or 4
Load cell type		S-type	
Load cell quantity		1 or 2	4
Load cell material	Standard	Alloy steel IP67	
	Optional	Stainless steel IP67	
Accuracy %		0,5 - 1	0,125-0,25
Speed sensor		RUDO S2-500 or 8000 ppr	
Control system	Standard	RUDO TDP control cabinet with 4,3 LCD TFT Touch screen	
	Optional	RUDO BST100 Control cabinet	
Required supply	Standard	120 V 50/60 Hz	
	Optional	220V 50/60 Hz	

Notes:

- 1._Standard Load Cells IP67 alloy Steel.
- 2._All our belt scales include: Weighing bridge, load cells, Joint box, control cabinet, speed sensor and manuals.
- 3._Standard Control cabinet output: 4-20 mA proportional to Flow. Specific communication protocols by request.
- 4._Please make your query for special dimensions and configurations.
- 5._RDI S.A. reserves the right to modify models, components, specifications and models continuity at any moment, any time without previous notification.

